

MODEL 307

COST-EFFICIENT, FEATURE-RICH TUBE WELDING POWER SUPPLY

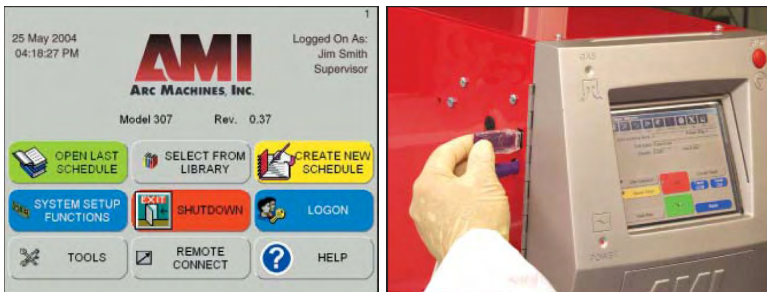
AMI

ARC MACHINES, INC.®

The widest range of orbital welding equipment in the world

The Model 307 is one of the world's most advanced orbital tube welding power supply of its type. It is economical, easy-to-use, packed with useful features, and compatible with all AMI fusion weld heads currently in the field, as well as the Model 95 series featuring wire feed.

The Windows™-based software is PC compatible, and supplied with multiple languages. A color touch-screen makes data entry easy and convenient. The USB port facilitates simple and convenient storage of weld schedules and project data. Among the many useful features are auto-weld and tack-weld program development, programming by time and/or position, multiple weld schedule libraries, weld data recording, graphical user interface and on-screen help.



QUICK SPECS

Input Power

100 - 240 VAC service
Single-phase
50/60 Hz

I/O Device

USB (2.0)

Memory Capacity

20 GB

Water Cooler

Optional

Weld Current

3 - 200 A
100% Duty Cycle
@ 150 A

Multi-Level Functions

Primary Amps, Background Amps, Primary RPM, Background RPM, Primary Pulse Rate, Background Pulse Rate, Background Wire Feed Rate, Current Mode (constant, pulsed), Travel Mode (continuous, stepped, off), Wire Mode (continuous, pulsed, off)

Compatible AMI Weld Heads

All fusion weld heads; Model 95 series with wire feed.

Current Pulse Rate

0.05 - 50 PPS

Overrides

Current, RPM, Wire,
Pulse Rate +/- 100%

Dimensions

15.75" x 11.5" x 25.25"
(40 cm x 29 cm x 64 cm)

Weight

62 lbs.
(28 kg)



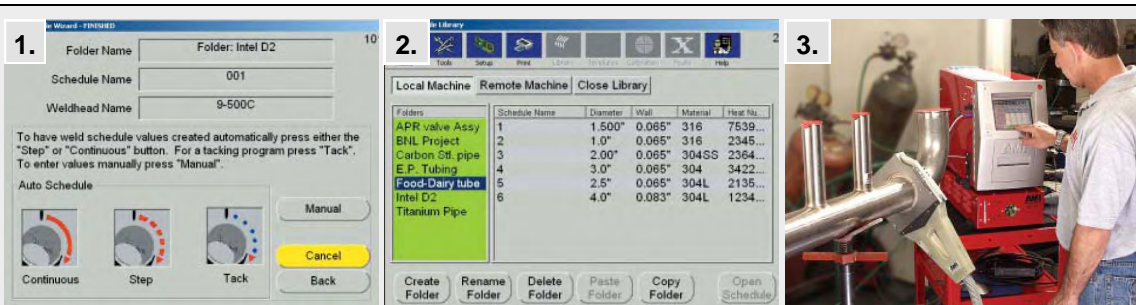
www.arcmachines.com

sales@arcmachines.com

MODEL 307 TUBE WELDING POWER SUPPLY

STANDARD FEATURES

- Automatic weld schedule generation (including tacking).
- Multiple weld schedule libraries.
- On-the-fly weld schedule modification.
- 3 weld counters.
- Rotation programming by time or degrees.
- Encoder-feedback servo controls.
- Graphical user interface.
- Project management software.
- Weld data logging.
- Real-time data acquisition.
- Customizable reports.
- English/metric converters.
- Built-in high-speed printer.
- USB port (for use with a mouse, keyboard, printer, external memory device, etc.).
- On-screen help.
- Multiple-language capability.
- Password protected log-on.



Automatic Weld Schedule Generation
Creates a weld schedule based on the weld head used, the tube or pipe size and wall thickness.

Weld Schedule Library
Stores weld schedules in multiple folders that may be categorized by tube or pipe size, material, job, project, operator name or any other appropriate category.

Weld Schedule Modification
Values of Amps, pulse rate, travel speed, and wire feed rate may be instantly raised or lowered at the touch of a button.



ACCESSORIES

- ⇒ Remote operator's pendant.
- ⇒ Weld ID label printer.
- ⇒ Weld head and pendant extension cables.
- ⇒ Water cooling unit.

Leaders & Innovators in Automated Orbital Welding

For further information please visit our website
or contact us at 1-818-896-9556



AMI
ARC MACHINES, INC.®

www.arcmachines.com

sales@arcmachines.com

HEADQUARTERS
Arc Machines, Inc.

10500 Orbital Way
Pacoima, CA 91331 U.S.A.
Tel: +1 / 818 / 896 / 9556
Fax: +1 / 818 / 890 / 3724
sales@arcmachines.com

EUROPEAN BRANCH OFFICE
Arc Machines, Inc.

Chemin du Lavasson 2, CH-1196
Gland, Switzerland
Tel: +41 / 22 / 995 / 0051
Fax: +41 / 22 / 995 / 0059
sales@arcmachines.ch

GERMAN OFFICE
Arc Machines GmbH

Markelsbach 2
D-53804 Much, Germany
Tel: +49 / 2245 / 91680
Fax: +49 / 2245 / 916868
sales@arcmachines.de

UK OFFICE
Arc Machines UK Limited
Unit 2 Lamport Court
Heartlands Business Park
Daventry, NN11 8UF, UK
Tel: +44 / 1327 / 312787
Fax: +44 / 1327 / 315034
sales@arcmachines.co.uk